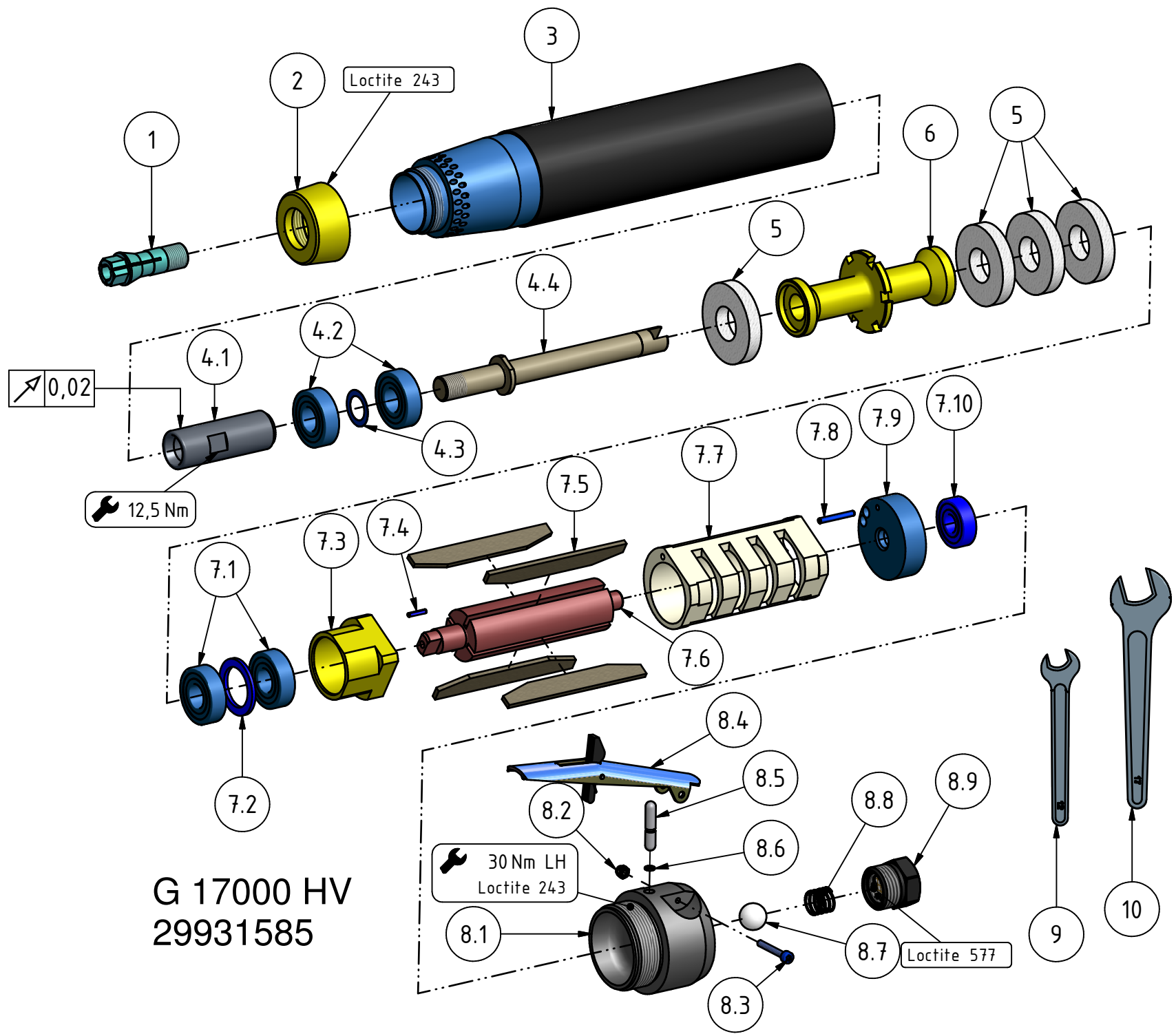


Schleifmaschine
Grinding machine
Meuleuse

G 17000 HV
29931 58 5

**MANNESMANN
DEMAG**

| Nr. No. | BENENNUNG | DESCRIPTION | DESIGNATION | Artikel Nr. article No. | St. Pieces |
|------------|---------------------------|-------------------------|--------------------------|----------------------------|---------------|
| 1 | Spannzange 8mm | collet 8mm | pince de serrage 8mm | 9369 818 | 1 |
| 2 | Deckel | Cover | Couvercle | 47092 26 3 | 1 |
| 3 | Gehäuse | Housing | Carter | 47092 24 5 | 1 |
| 4 | Zangenspindel vst. | Spindle | Broche de serrage | 60006 18 5 | 1 |
| 4.1 | Zangenspindel | spindle | broche de serrage | 29900 30 3 | 1 |
| 4.2 | Rillenkugellager | ball bearing | roulement à billes | 9357 010 | 2 |
| 4.3 | Passscheibe | adjusting washer | disque | 9332 105 | 1 |
| 4.4 | Spindel | Spindle | Broche de serrage | 60006 18 3 | 1 |
| 5 | Dämpfung | Silencer ring | Silencieux | 47092 28 6 | 4 |
| 6 | Schalldämpfer | Silencer | Silencieux | 47092 27 3 | 1 |
| 7 | Motorblock | Motor complete | Moteur cpl. | 29918 43 5 | 1 |
| 7.1 | Rillenkugellager | ball bearing | roulement à billes | 9357 010 | 2 |
| 7.2 | Stützscheibe | supporting ring | rondelle | 9332 166 | 1 |
| 7.3 | Lagerschild vorne | End plate front | Flasque de palier | 47091 19 3 | 1 |
| 7.4 | Spannstift | dowel pin | ergot | 9335 220 | 1 |
| 7.5 | Lamelle | vane | palette | 47091 22 6 | 4 |
| 7.6 | Rotor | Rotor | Rotor | 47091 21 3 | 1 |
| 7.7 | Zylinder | cylinder | cylindre | 47091 20 3 | 1 |
| 7.8 | Spannstift | dowel pin | goupille | 9335 217 | 1 |
| 7.9 | Lagerschild hinten | End plate rear | Flasque de palier | 47091 23 3 | 1 |
| 7.10 | Rillenkugellager | ball bearing | roulement à billes | 9357 334 | 1 |
| 8 | Hebelventil kpl. | Lever valve cpl. | la soupape compl. | 29931 59 5 | 1 |
| 8.1 | Ventilgehäuse | Valve housing | Cage de clapet | 29931 61 3 | 1 |
| 8.2 | Sechskantmutter | scrow nut | rainure | 9312 131 | 1 |
| 8.3 | Zylinderschraube | cylindrical screw | vis à tête cylindrique | 9304 009 | 1 |
| 8.4 | Sicherheitshebel vst. | safety lever | levier de sécurité | 60007 45 5 | 1 |
| 8.5 | Ventilbolzen | Valve stud | Boulon de vanne | 29931 60 3 | 1 |
| 8.6 | O-Ring | o-ring | joint torique | 9319 337 | 1 |
| 8.7 | Kugel | ball | bille | 9319 988 | 1 |
| 8.8 | Druckfeder | spring | ressort | 9330 047 | 1 |
| 8.9 | Siebträger vst. | screen carrier cpl. | filtre support cpl. | 46909 22 5 | 1 |
| 9 | Schlüssel SW 12 | wrench SW 12 | clé SW 12 | 9331 007 | 1 |
| 10 | Schlüssel SW 17 | wrench SW 17 | clé SW 17 | 9331 042 | 1 |



G 17000 HV
29931585