

Your contact person

Mr. Export Team✉ export@mannesmann-demag.com

Technical Data

Type	E 33 P
Article Nr.	29946396
For screws up to	M 18 - M 33
Maximum torque	2500 Nm
Driv. square end	1"
Length	203.0 mm
Throttle stages	-
Air consumption	1.1 m ³ /min
Weight	7.27 kg
Number of blows	780 min ⁻¹
Free speed	4300 min ⁻¹
Connection thread	G 1/2" i
Hose I.D.	13.0 mm
Noise level	92 dB(A)
Hammer system	3 jaw hammer system
Accessories supplied	grommet, percussion fat, oil bottle

All data related to 6.3 bar working pressure.
Subject to technical alterations.

Accessories

Type	Article Nr.
Variacor 1/2" Flexible and robust swivel-joint	60001626
Throttle regulation 1/2" i	03024474
1" square, SW 22	9376458
1" square, SW 22	9376459
1" square, SW 24	9376249
1" square, SW 24	9376259
1" square, SW 27	9376250
1" square, SW 27	9376260
1" square, SW 30	9376251
1" square, SW 30	9376261
1" square, SW 32	9376252
1" square, SW 32	9376262
1" square, SW 36	9376253
1" square, SW 36	9376263
1" square, SW 41	9376254
1" square, SW 41	9376264
1" square, SW 46	9376255
1" square, SW 46	9376265
1" square, SW 50	9376256
1" square, SW 50	9376266
1" square, SW 55	9376257
1" square, SW 55	9376267
1" square, SW 60	9376258
1" square, SW 60	9376268
Power socket wrench - Set 1" 7 socket wrenches 24 / 27 / 30 / 32 / 33 / 36 / 41 mm	60029196

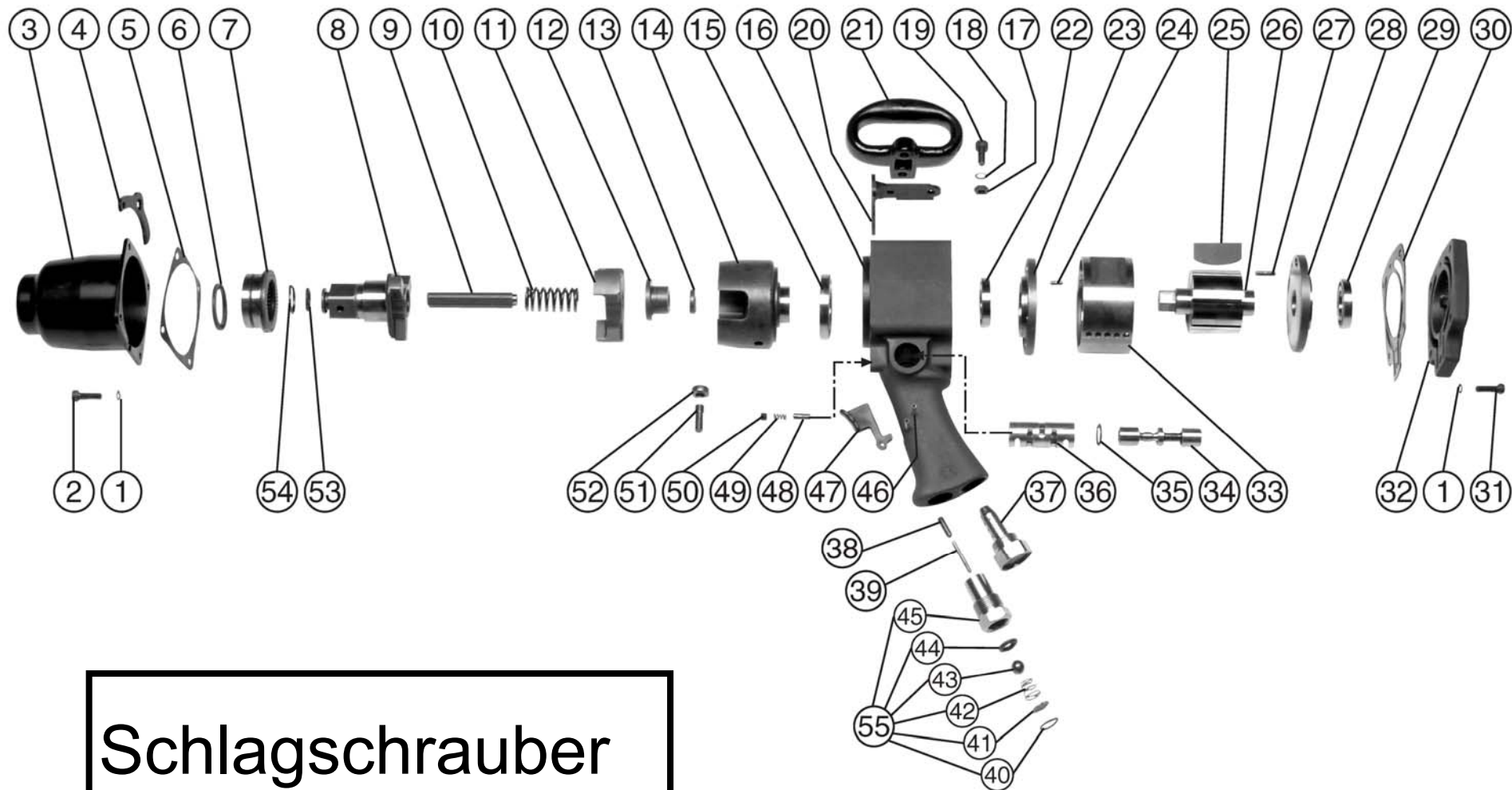
Schlagschrauber E 33 P
Impact wrench
29946 39 6

MANNESMANN
DEMAG

Nr.	BENENNUNG	DESCRIPTION	Artikel-Nr.	Stück
1	Federring	spring washer	9314 008	9
2	Zylinderschraube	cylindrical screw	29948 78 6	4
3	Schlagwerksgehäuse	impact housing	29948 79 6	1
4	Bügel	bow	29948 80 6	1
5	Dichtung	sealing	29948 81 6	1
6	Ring	ring	29948 82 6	1
7	Büchse	bushing	29948 83 6	1
8	Amboss	anvil	29948 85 6	1
9	Nutwelle	axle	030 506 74	1
10	Feder	spring	29948 87 6	1
11	Schaltkupplung	clutch	29948 88 6	1
12	Nocken	cam	030 510 74	1
13	Ring	ring	29948 89 6	1
14	Schwungrad	flywheel	29948 90 6	1
15	Rillenkugellager	ball bearing	9357 049	1
16	Gehäuse	housing	29948 91 6	1
17	Scheibe	washer	29948 92 6	2
18	Federring	spring washer	030 553 74	2
19	Schraube	screw	29948 93 6	2
20	Winkelstück	angle piece	29948 94 6	1
21	Griff	handle	29948 95 6	1
22	Rillenkugellager	ball bearing	9357 036	1
23	Lagerschild	end plate	29948 96 6	1
24	Zylinderstift	cylindrical pin	032 077 76	1
25	Lamelle	vane	29948 97 6	7
26	Rotor	rotor	29948 98 6	1
27	Zylinderstift	cylindrical pin	9315 178	1
28	Lagerschild	end plate	29948 99 6	1
29	Rillenkugellager	ball bearing	9357 036	1
30	Dichtung	sealing	29949 00 6	1
31	Zylinderschraube	cylindrical screw	9304 032	5
32	Deckel	cover	29949 01 6	1
33	Zylinder	cylinder	29949 02 6	1
34	Ventilstift	valve pin	29949 03 6	1
35	O-Ring	O-ring	29949 04 6	2
36	Steuerhülse	control bush	29949 05 6	1
37	Schalldämpfer	silencer	29949 06 6	1
38	Ventilbüchse	valve bushing	29932 34 6	1
39	Ventilbüchse	valve bushing	29921 74 6	1
40	Seeger-Ring	ring	29932 35 6	1
41	Sieb	screen	032 071 76	1
42	Ventilfeder	valve spring	030 533 74	1
43	Ventilkugel	valve ball	030 534 74	1
44	Dichtung	sealing	030 235 74	1
45	Hülse	sleeve	29949 07 6	1
46	Stift	pin	29949 08 6	2
47	Drücker	trigger	030 238 74	1

Schlagschrauber E 33 P
Impact wrench
29946 39 6

Nr.	BENENNUNG	DESCRIPTION	Artikel-Nr.	Stück
48	Stift	pin	29949 09 6	1
49	Feder	spring	030 223 74	1
50	Gewindestift	set screw	29932 39 6	1
51	Walzenstift	pin	030 513 74	1
52	Walze	roll	030 512 74	1
53	O-Ring	O-ring	29932 40 6	1
54	Federring	spring washer	030 556 74	1
55	Ventileinsatz	valve insert	29949 10 6	1
56	Griff kpl.	handle cpl.	29949 11 6	1
57	Flansch kpl.	flange cpl.	29949 12 6	1
58	Flansch kpl.	flange cpl.	29949 13 6	1
59	Gehäuse kpl.	housing cpl.	29949 14 6	1
60	Handgriff kpl.	handle cpl.	29949 15 6	1
61	Schlagwerksgehäuse mit Büchse	impact housing+bushing	29949 16 6	1
62	Schlagwerksgehäuse kpl.	impact housing cpl.	29949 17 6	1



Schlagschrauber
29946396
E 33 P