

Druckluftwerkzeuge | Druckluftmotoren

With the new modular deflection unit SSU 60 you can combine many air motors, chamfering tools, filing machines or grinding spindles.

Your contact person

Mr. Export Team

✉ export@mannesmann-demag.com



Technical Data

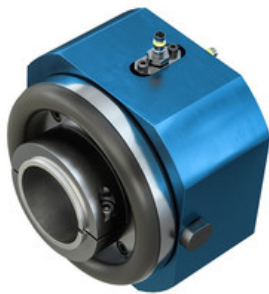
Type	SSU 60
Article Nr.	60058005
Weight	- kg
Sensor to control the deflection	✓
Clamping diameter	60.0 mm
Deflection (radial) up/down	5°

Druckluftwerkzeuge | Druckluftmotoren

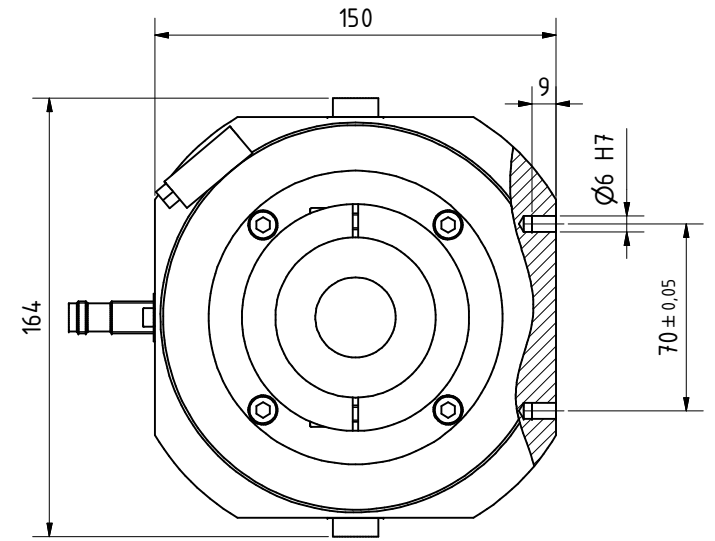
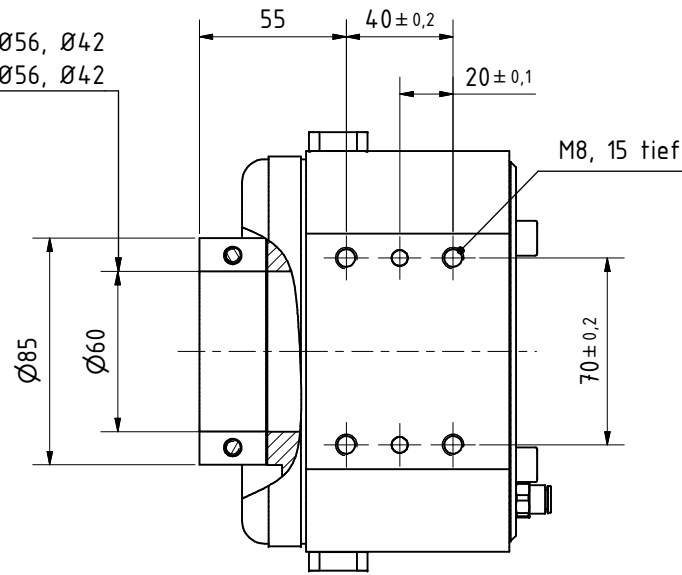
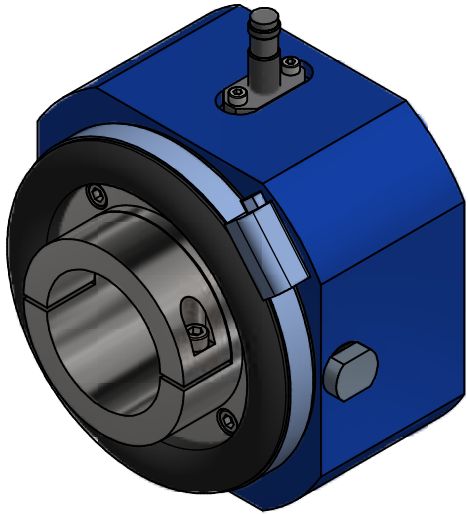
Accessories

Type	Article Nr.
Reduction sleeve 42 mm	60056353
Reduction sleeve 56 mm	60056363

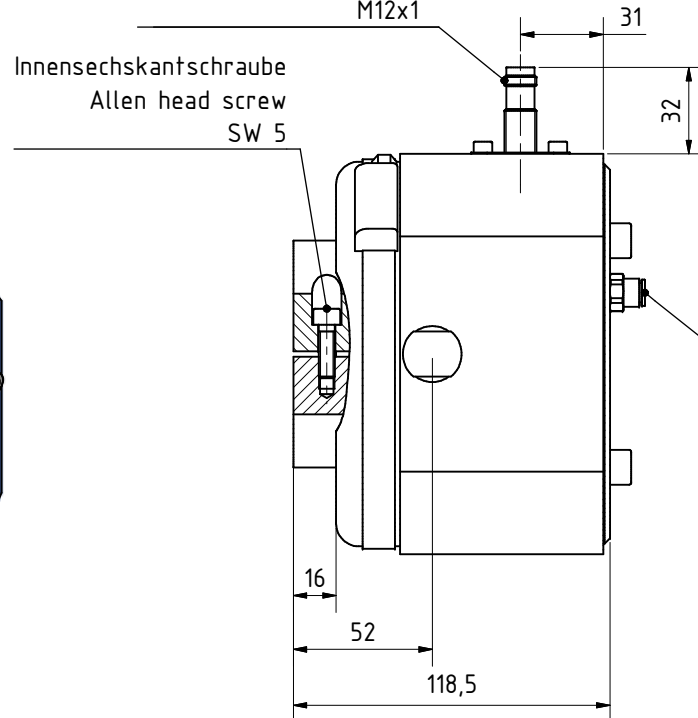
Additional Images



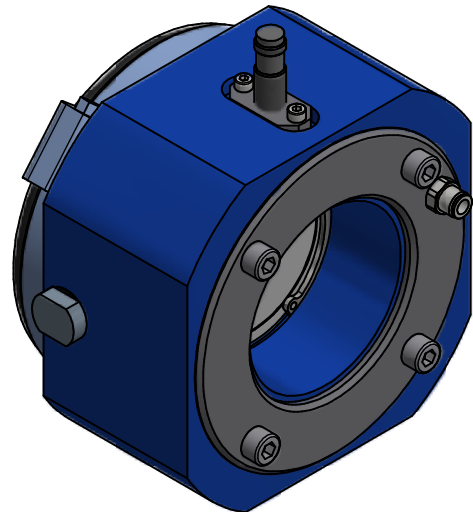
Adapterhülse verfügbar für Ø56, Ø42
 adapter sleeve available for Ø56, Ø42



Sensoranschlussgewinde
 thread of sensor
 M12x1



für Schlauch mit Aussen-Ø 6 mm
 for air hose O.D. 6 mm



SSU 60
 60058005

**MANNESMANN
 DEMAG**

Änderungsstand:

10.11.2016