

Your contact person

Mr. Export Team✉ export@mannesmann-demag.com

Dati tecnici

Tipo	E 16 P3
Article Nr.	03954774
Per viti fino a	M 6 - M 18
Momento di serraggio max.	350 Nm
Azionamento quadro	1/2"
Lunghezza	180.0 mm
Stadi di regolazione	4
Consumo d'aria	0.4 m ³ /min
Peso	2.35 kg
Numero di battute min.	1500 min ⁻¹
Numero di giri (a vuoto)	8000 min ⁻¹
Filettatura di raccordo	G 1/4" i
Diametro tubo interno	10.0 mm
Livello del rumore	72 dB(A)
Batteria	1 martello
Accessori in dotazione	staffa, grasso di batteria, bottiglia d'olio

Dati si riferiscono ad una pressione d'esercizio di 6.3 bar

Riserva di modifiche tecniche senza preavviso

Druckluftwerkzeuge | Druckluftmotoren

Accessori

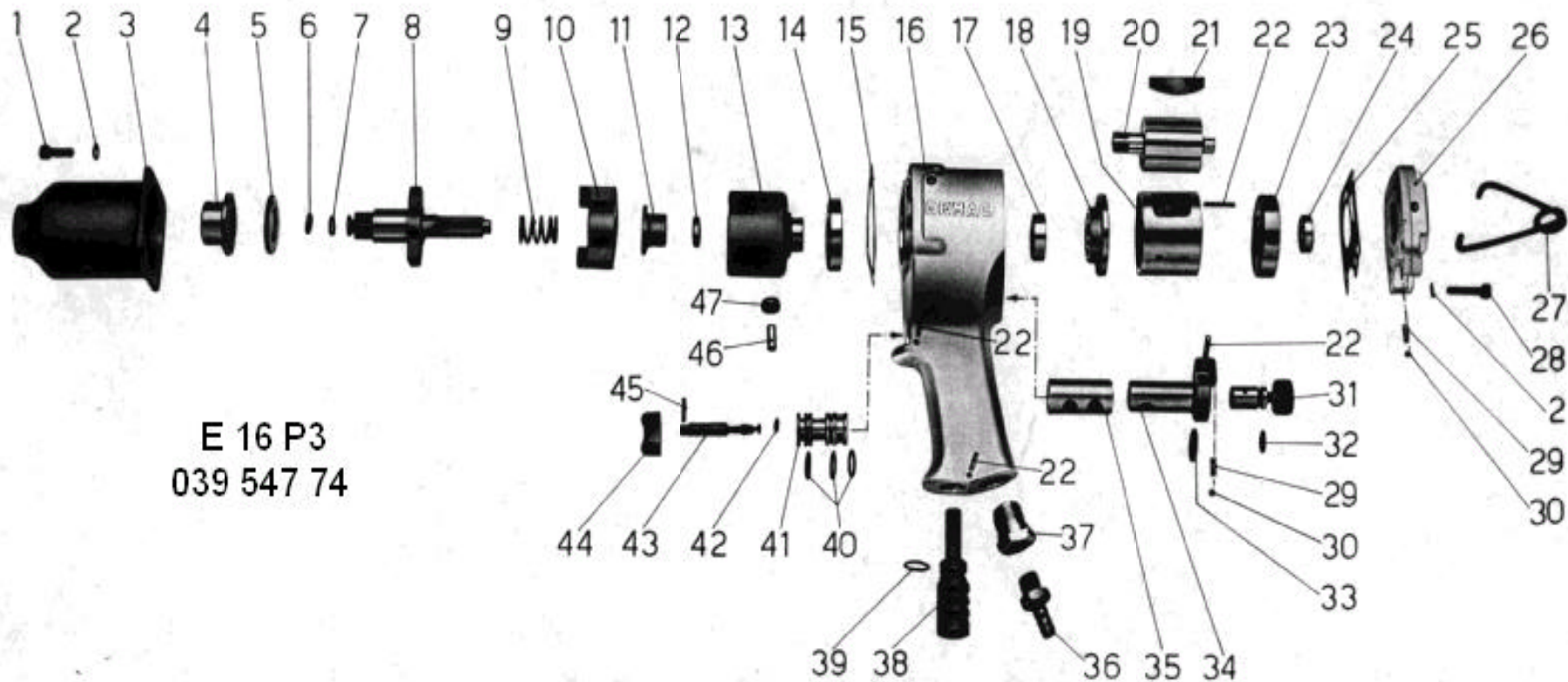
Tipo	Article Nr.
Variacor 1/4" Giunto rotondo flessibile e robusto	60001606
Faretra di avvitatura Per E 10 - E 18, RRI; HPT, ULT	60012176
1/2" quadro, SW 10	9376215
1/2" quadro, SW 10	9376204
1/2" quadro, SW 11	9376205
1/2" quadro, SW 11	9376216
1/2" quadro, SW 13	9376206
1/2" quadro, SW 13	9376217
1/2" quadro, SW 14	9376207
1/2" quadro, SW 14	9376218
1/2" quadro, SW 17	9376208
1/2" quadro, SW 17	9376219
1/2" quadro, SW 19	9376209
1/2" quadro, SW 19	9376220
1/2" quadro, SW 22	9376210
1/2" quadro, SW 22	9376221
1/2" quadro, SW 24	9376211
1/2" quadro, SW 24	9376222
1/2" quadro, SW 27	9376212
1/2" quadro, SW 27	9376223
1/2" quadro, SW 30	9376213
Set di chiavi a bussola di forza 1/2" 10 chiavi di bussola 9 / 10 / 11 / 13 / 14 / 17 / 19 / 22 / 24 / 27 mm	60029176

Schlagschrauber
Impact wrench
Clé à choc

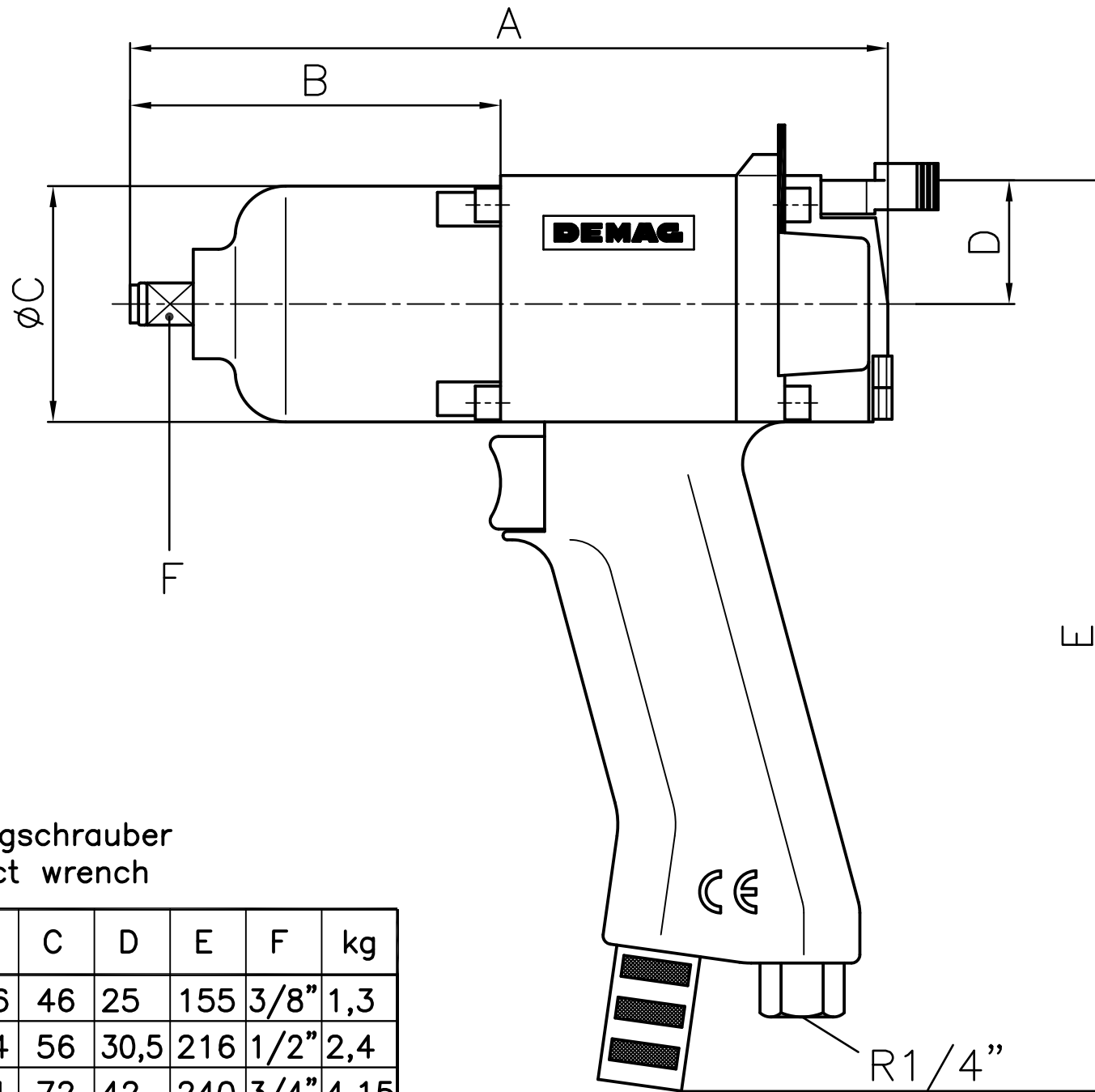
E 16 P3
039 547 74

MANNESMANN
DEMAG

Nr. No.	BENNENUNG	DESCRIPTION	DESIGNATION	Teile-Nr. Parts-No. N° de pièces	Stück Quantity Quantité
1	Schraube	Schraube	vis	039 242 74	4
2	Federring	lock washer	rondelle elastique	9314 007	8
3	Schlagwerksgehäuse	housing cpl.	carter cpl.	039 200 74	1
4	Büchse	bushing	boite	039 201 74	1
5	Distanzscheibe	space ring	bague de distance	039 202 74	1
6	Klemmring	clamping ring	anneau de retenue	030 050 74	1
7	Runddichtring	seal ring	anneau de joint	030 052 74	1
8	Amboss mit Klemmring und gebohrt	anvil with clamping ring and bore through	enclume avec anneau de retenue et perfore	039 203 74	1
9	Feder	spring	ressort	039 214 74	1
10	Schlaggewicht	impact weight	poids de percussion	039 215 74	1
11	Nocken	cam	came	039 216 74	1
12	Nutwellensitz	axle seat	siège d'axe	039 548 74	1
13	Schwungrad	flywheel	volant	039 549 74	1
14	Rillenkugellager	ball bearing	roulement à billes	9357 065	1
15	Dichtung	gasket	joint	039 550 74	1
16	Gehäuse	housing	carter	039 204 74	1
17	Rillenkugellager	ball bearing	roulement à billes	9357 025	1
18	Lagerschild	end plate	flasque de palier	039 205 74	1
19	Zylinder	Cylinder	cylindre	030 034 74	1
20	Rotor	rotor	rotor	039 206 74	1
21	Lamelle	vane	lame	030 036 74	6
22	Stift	pin	goupille	030 024 74	4
23	Lagerschild	end plate	flasque de palier	039 207 74	1
24	Rillenkugellager	ball bearing	roulement à billes	9357 228	1
25	Dichtung	gasket	joint	039 236 74	1
26	Deckel	cover	couvercle	039 436 74	1
27	Bügel	frame	bride	039 208 74	1
28	Schraube	Schraube	vis	9304 019	4
29	Feder	spring	ressort	030 023 74	2
30	Kugel	ball	bille	9357 912	2
31	Drosselventil	throttle valve	soupape d'etranglement	039 237 74	1
32	Runddichtring	seal ring	anneau de joint	030 021 74	1
33	Runddichtring	seal ring	anneau de joint	039 239 74	1
34	Umschaltbolzen	reversing pin	boulon de changement	039 223 74	1
35	Büchse	bushing	boite	039 224 74	1
36	Gewindetülle	sleeve	busette	9361 479	1
37	Siebträger	strainer support	porte-tamis	039 209 74	1
38	Auspuff	exhaust pipe	tube d'echappement	039 434 74	1
39	Runddichtring	seal ring	anneau de joint	9319 044	1
40	Runddichtring	seal ring	anneau de joint	039 240 74	3
41	Buchse	bushing	boite	039 210 74	1
42	Runddichtring	seal ring	anneau de joint	9319 007	1
43	Ventil	valve	soupape	039 211 74	1
44	Drücker	trigger	détente	039 222 74	1
45	Zylinderstift	pin	goupille	9315 714	1
46	Walzenstift	pin	goupille	039 212 74	1
47	Walze	roll	cylindre	039 244 74	1



E 16 P3
039 547 74



Schlagschrauber
Impact wrench

Typ	A	B	C	D	E	F	kg
E10P3	165	76	46	25	155	3/8"	1,3
E16P3	180	104	56	30,5	216	1/2"	2,4
E24P3	214	121	72	42	240	3/4"	4,15
E30P	225	139	88	72	268	1"	6,3

				MANNESMANN DEMAG		Blatt A4
Zust.	Änderung	Datum	Name	Ersatz für:		Ersetzt durch:
						Bl.