

Your contact person

**Mr. Export Team**✉ [export@mannesmann-demag.com](mailto:export@mannesmann-demag.com)

## Dati tecnici

<b>Tipo</b>	<b>MD 13-130</b>
Article Nr.	60061096
Inserto	R 25x75
Impugnatura	Impugnatura a pugno
Numero di battute min.	1075 min <sup>-1</sup>
Energia di percossa	50.0 J
Consumo d'aria	1.1 m <sup>3</sup> /min
Stantuffo ø	36.0 mm
Corsa dello stantuffo	180 mm
Lunghezza	640.0 mm
Peso	13.00 kg
Diametro tubo interno	19.0 mm
Filettatura di raccordo	Ra 3/4"
Vibrazione	14,9 m/s <sup>2</sup>
Tempo lavorato	0.9 h
Suono	103 dB(A)

**Dati si riferiscono ad una pressione d'esercizio di 6.3 bar**

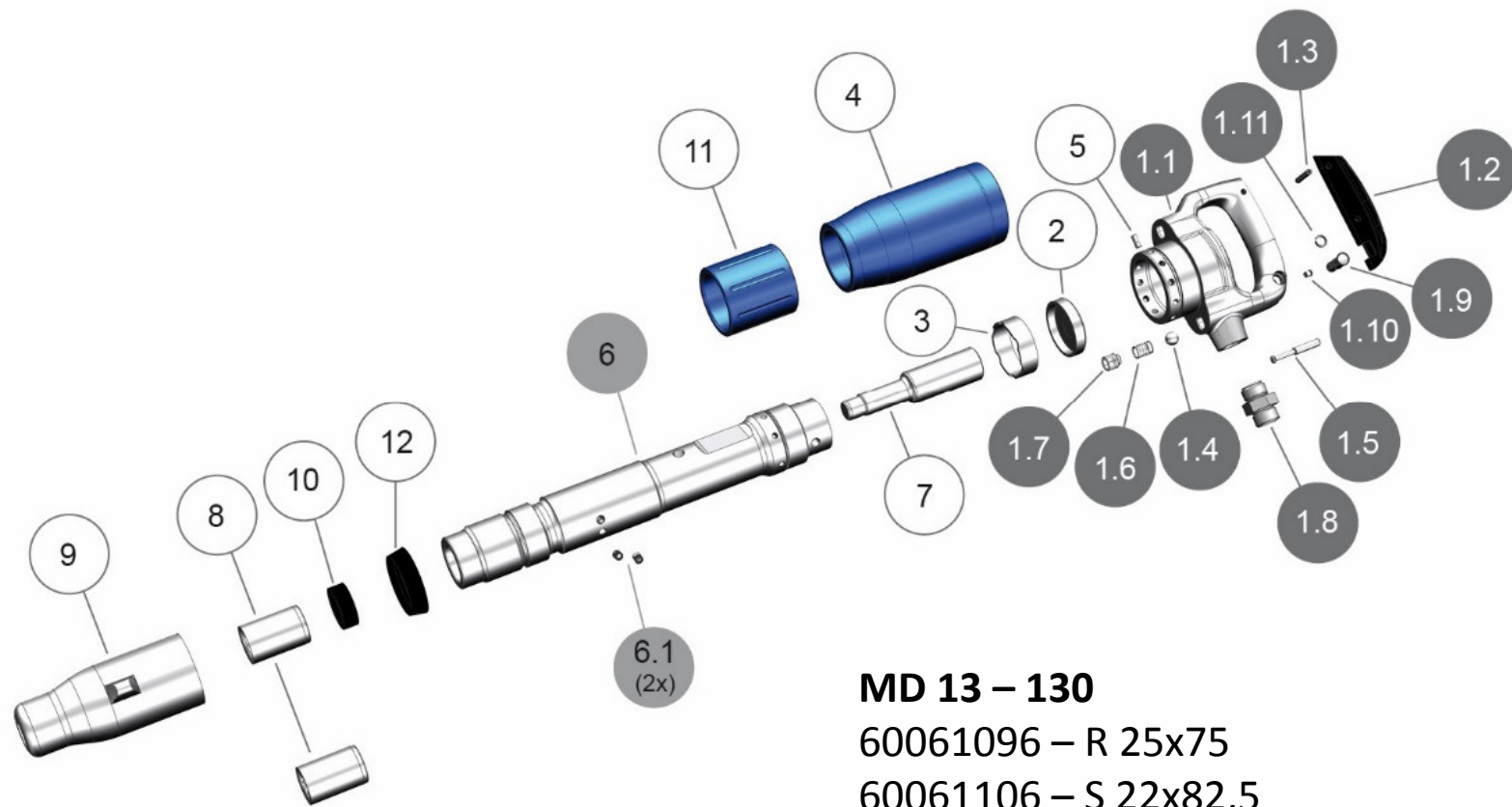
Riserva di modifiche tecniche senza preavviso

**Meißelhammer  
Chisel hammer  
Burineur**

**MD 13-130**  
60061096 - R 25x75  
60061106 - S 22x82,5

**MANNESMANN  
DEMAG**

Pos.	BENENNUNG	DESCRIPTION	Lager-Nr. Stock-No. No. de magasin	St.
1	Griffkörper komplett	Handle body complete	3 000 27830	1
1.1	Griffkörper	Handle body	3 000 28210	1
1.2	Drücker	Trigger	1 000 85486	1
1.3	Spannstift	Dowel pin	1 000 70478	1
1.4	Kugel	Ball	1 000 67974	1
1.5	Ventilstift	Valve pin	1 000 68259	1
1.6	Druckfeder	Spring	1 000 67972	1
1.7	Verschraubung	Connected Screw	1 000 68267	1
1.8	Anschlussnippel komplett	Connecting nipple complete	1 000 72828	1
1.9	Druckknopf	Push button	1 000 85014	1
1.10	Federelement	Spring element	1 000 85151	1
1.11	Sprengring	Snap ring	1 000 84932	1
2	Deckel	Cover	3 000 21219	1
3	Steuerring	Control ring	3 000 21220	1
4	Schalldämpfer	Silencer	3 000 26013	1
5	Sicherungsstift	Safety pin	1 000 71835	1
6	Zylinder	Cylinder	3 000 28224	1
6.1	König-Expander	König-expander	1 000 70576	2
7	Kolben	Piston	3 000 22084	1
8	Meißelbüchse <b>R 25x75</b>	Chisel bush <b>R 25x75</b>	3 000 23310	1
	Meißelbüchse <b>S 22x82,5</b>	Chisel bush <b>S 22x82,5</b>	3 000 23305	1
9	Schraubkappe R25	Retainer cap	1 000 71778	1
10	Pufferring	Buffer ring	1 000 67960	1
11	Ausgleichsring	Spacing ring	3 000 26022	1
12	Sicherungsring	Safety ring	1 000 72821	1



**MD 13 – 130**

60061096 – R 25x75

60061106 – S 22x82,5