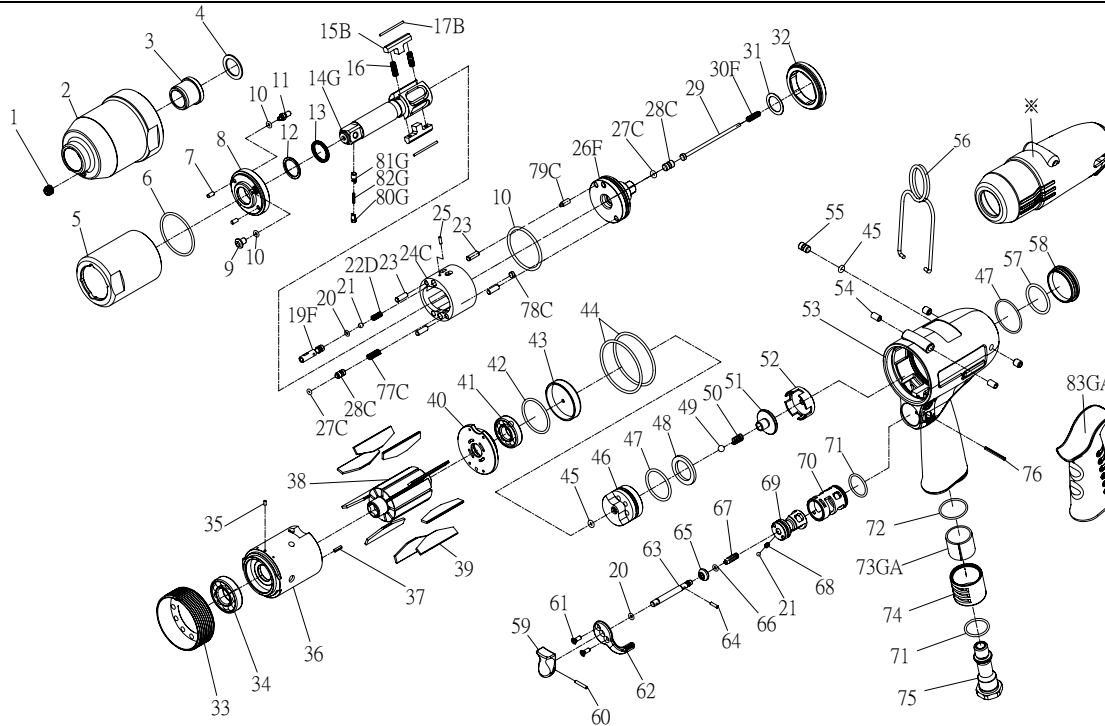


RRI-100T IMPULSE WRENCH



Edition:07A

| Index No. | Part No. | Description | Q'ty | Index No. | Part No. | Description | Q'ty |
|-----------|-------------|---------------------|------|-----------|-----------|--|------|
| 1 | 00-0612 | Screw | 1 | 48 | IS100-312 | Washer | 1 |
| 2 | I100-201 | Pulse Unit Housing | 1 | 49 | 00-3824 | Steel Ball | 1 |
| 3 | I100-202 | Bushing | 1 | 50 | IS100-313 | Spring | 1 |
| 4 | I100-424 | Washer | 1 | 51 | IS100-311 | Valve | 1 |
| 5 | I100-401 | Pulse Cylinder Seat | 1 | 52 | IS100-518 | Seat | 1 |
| 6 | 00-41106 | O-Ring | 2 | 53 | IS100-101 | Motor Housing | 1 |
| 7 | 00-3426 | Spring Pin | 2 | 54 | I40S-108 | Bushing | 4 |
| 8 | I100-408 | Front Plate | 1 | 55 | IS100-609 | Screw | 1 |
| 9 | I100-410 | Greasing Screw | 1 | 56 | I40S-102 | Hanger | 1 |
| 10 | 00-4153 | O-Ring | 3 | 57 | 00-41166 | O-Ring | 1 |
| 11 | I100-411 | Valve Screw | 1 | 58 | I100-104 | Nut | 1 |
| 12 | I100-409 | Back Up Ring | 1 | 59 | I130-504 | Trigger | 1 |
| 13 | 00-2601 | X-Ring | 1 | 60 | 00-3354 | Spring Pin | 1 |
| 14G | I100-405-B | Anvil | 1 | 61 | 00-0505 | Screw | 2 |
| 15B | I100-406-B | Drive Blade | 2 | 62 | I100-503 | Regulator Knob | 1 |
| 16 | I100-407 | Spring | 2 | 63 | IS100-505 | Valve Stem | 1 |
| 17B | I100-452 | Roller | 2 | 64 | 00-3356 | Spring Pin | 1 |
| 19F | IS100-412-B | Valve | 1 | 65 | I100-508 | Bushing | 1 |
| 20 | 00-4101 | O-Ring | 2 | 66 | 00-41172 | O-Ring | 1 |
| 21 | 00-3813 | Steel Ball | 2 | 67 | I100-507 | Spring | 1 |
| 22D | IS100-425 | Spring | 1 | 68 | I100-506 | Spring | 1 |
| 23 | 00-3432 | Pin | 4 | 69 | IS100-502 | F/R Valve | 1 |
| 24C | I100-404-B | Pulse Cylinder | 1 | 70 | I100-501 | Valve Sleeve | 1 |
| 25 | 00-3441 | Pin | 1 | 71 | 00-41111 | O-Ring | 2 |
| 26F | IS100-415-B | Rear Plate | 1 | 72 | 00-4158 | O-Ring | 1 |
| 27C | 00-41173 | O-Ring | 2 | 73GA | I70-601 | Muffler | 1 |
| 28C | IS40S-421 | Pressure Valve | 2 | 74 | I100-603 | Exhaust Deflector | 1 |
| 29 | IS100-314 | Shut Off Stem | 1 | | I100-604A | Air Inlet 1/4"-19PF | |
| 30F | IS150-317 | Spring | 1 | 75 | I100-604B | Air Inlet 1/4"-19PT | 1 |
| 31 | I100-423 | Washer | 1 | | I100-604C | Air Inlet 1/4"-18NPT | |
| 32 | I100-402 | Lock Nut | 1 | 76 | I100-511 | Pin | 1 |
| 33 | I100-306 | Lock Nut | 1 | 77C | I100-453 | Spring | 1 |
| 34 | 00-2345 | Ball Bearing | 1 | 78C | I40S-454 | Block Cap | 1 |
| 35 | 00-3324 | Spring Pin | 1 | 79C | IS100-456 | Spring fixed Pin | 1 |
| 36 | I100-302 | Cylinder | 1 | 80G | I100-462 | Upper Pin | 1 |
| 37 | 00-3339 | Spring Pin | 1 | 81G | I100-463 | Lower Pin | 1 |
| 38 | I100-303 | Rotor | 1 | 82G | I100-464 | Spring | 1 |
| 39 | I100-304 | Rotor Blade | 9 | 83GA | I100-103 | Housing Rubber | 1 |
| 40 | I100-305 | Rear Plate | 1 | * | I100-109 | Tool Cover | 1 |
| 41 | 00-2358 | Ball Bearing | 1 | * | IS100RK | Repair kit :Index No- 6(2);10(2);12;13;16(2);27C(2) | |
| 42 | 00-41138 | O-Ring | 1 | * | IS100SK | Service kit :Index No- 8,14G;15B(2);17B(2); 26F; 39(9); 50; 65; 66; 67 | |
| 43 | IS100-307 | Rear Cover | 1 | * | | | |
| 44 | 00-41116 | O-Ring | 2 | * | | | |
| 45 | 00-41113 | O-Ring | 2 | * | | | |
| 46 | IS100-524 | Valve Seat | 1 | * | I40-451 | Impulse Oil | |
| 47 | 00-41127 | O-Ring | 2 | | | | |

★ Pulse unit includes:

Index No : 5,6,7,8,9,10,11,12,13,14G,15B,16,17B, 19F,20,21,22D,23,24C,25,26F,27C,28C,32,77C,78C,79C,80G,81G,82G