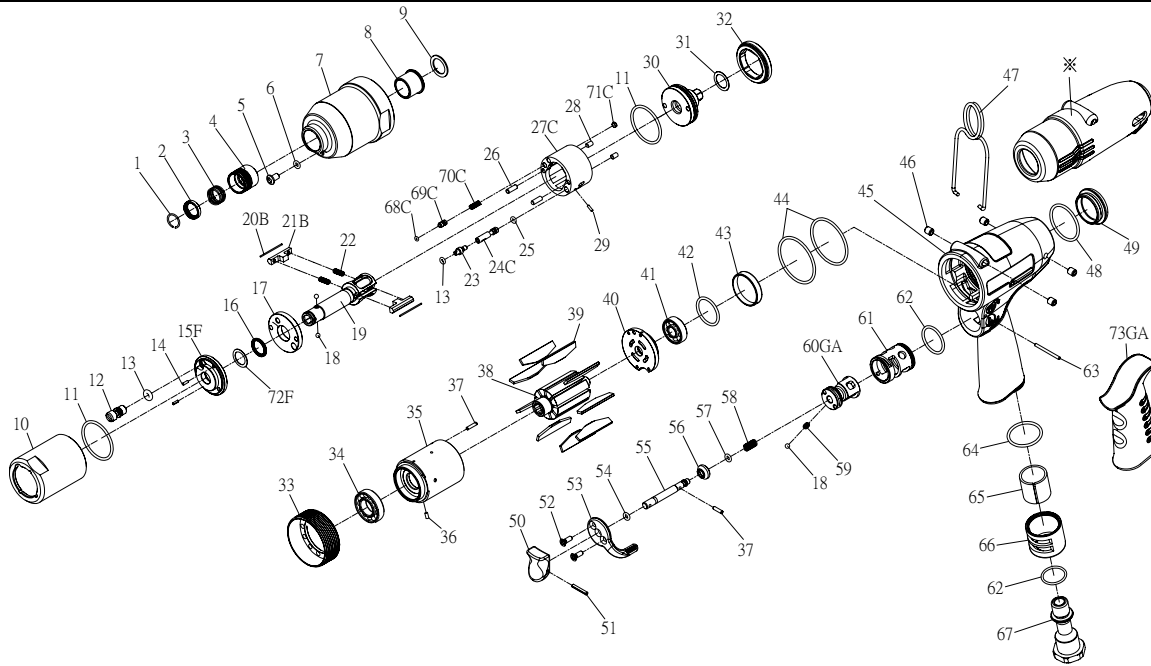


# RRI-50A IMPULSE WRENCH



Edition:07A

Index No.	Part No.	Description	Q'ty	Index No.	Part No.	Description	Q'ty
1	757-026	Anvil Collar	1	42	00-41135	O-Ring	1
2	I40SD-419	Hold Spacer	1	43	I40-307	Rear Cover	1
3	I40SD-418	Spring	1	44	00-41144	O-Ring	2
4	I40SD-417	Quick change Hold	1	45	I40-101	Motor Housing	1
5	I100-410	Plug	1	46	I40S-108	Bushing	4
6	00-4153	O-Ring	1	47	I40S-102	Hanger	1
7	I40S-201	Front Housing	1	48	00-41146	O-Ring	1
8	I40S-202	Bushing	1	49	I40-104	Nut	1
9	I40S-424	Washer	1	50	I40-504	Trigger	1
10	I40S-401	Pulse Cylinder Housing	1	51	00-3354	Spring Pin	1
11	00-41127	O-Ring	2	52	00-0505	Screw	2
12	I70-410	Oil Plug	1	53	I100-503	Regulator Knob	1
13	00-41113	O-Ring	2	54	00-4101	O-Ring	1
14	00-3318	Spring Pin	2	55	IS40-505	Valve Stem	1
15F	I40S-403-B	Front Plate Cover	1	56	I100-508	Bushing	1
16	00-2602	X-Ring	1	57	00-41172	O-Ring	1
17	I40S-408	Front Plate	1	58	I40-507	Spring	1
18	00-3813	Steel Ball	3	59	I100-506	Spring	1
19	I40SD-405	Main Shaft	1	60GA	IS40-502	F/R Valve	1
20B	I40S-452	Roller	2	61	I40-501	Valve Sleeve	1
21B	I40S-406-B	Drive Blade	2	62	00-41111	O-Ring	2
22	I40S-407	Spring	2	63	I100-511	Pin	1
23	I40S-411	Adjust Screw	1	64	00-41145	O-Ring	1
24C	IS40S-412-B	Valve	1	65	I40-601	Muffler	1
25	00-41130	O-Ring	1	66	I40-603	Exhaust Deflector	1
26	00-3435	Pin	2		I40-604A	Air Inlet 1/4"-19PF	
27C	I40S-404-B	Pulse Cylinder	1	67	I40-604B	Air Inlet 1/4"-19PT	1
28	00-3407	Pin	2		I40-604C	Air Inlet 1/4"-18NPT	
29	00-3436	Pin	1	68C	00-41173	O-Ring	1
30	I40S-415	Rear Plate	1	69C	IS40S-421	Pressure Valve	1
31	I40S-423	Washer	1	70C	I40S-453	Spring	1
32	I40S-402	Lock Nut	1	71C	I40S-454	Block Cap	1
33	I40S-306	Lock Nut	1	72F	I40-409	Back Up Ring	1
34	00-2348	Ball Bearing	1	73GA	I60-103	Housing Rubber	1
35	I50-302	Cylinder	1	※	I40-109	Tool Cover	1
36	00-3324	Spring Pin	1	※	I50DRK	Repair kit :Index No-11(2);13(2);16;22(2);68C;72F	
37	00-3356	Spring Pin	2	※	I50DSK	Service kit :Index No-17;19;20B(2);21B(2); 30; 39(9)	
38	I40S-303	Rotor	1	※		56; 57; 58	
39	I40S-304	Rotor Blade	9	※			
40	I40-305	Rear Plate	1	※			
41	00-2356	Ball Bearing	1	※	I40-451	Impulse Oil	

★ Pulse unit includes:

Index No : 10,11,12,13,14,15F,16,17,19,20B,21B,22,23,24C,25,26,27C,28,29,30,32,68C,69C,70C,71C,72F