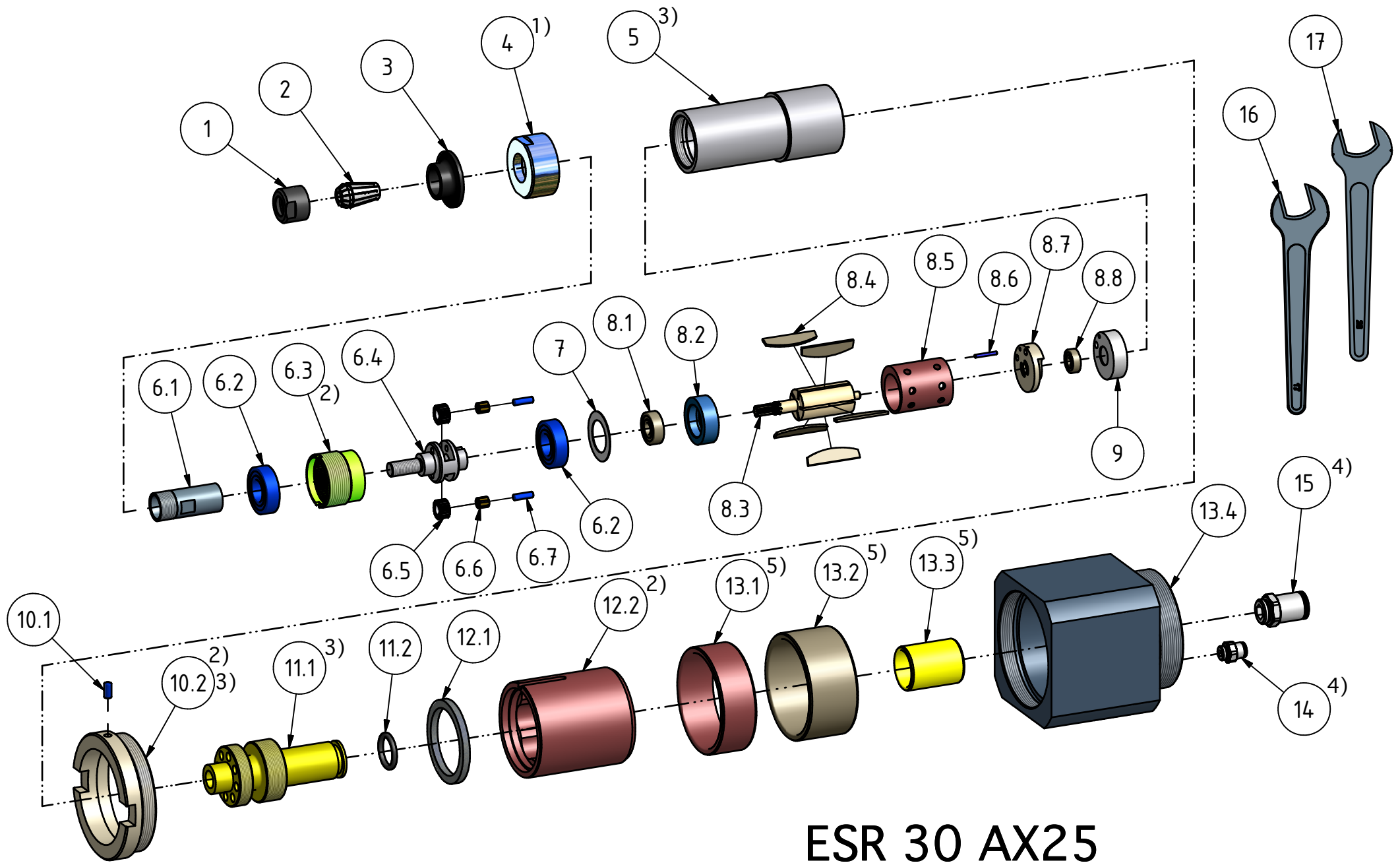


| Nr.<br>No.           | BENENNUNG                  | DESCRIPTION                     | DÉSIGNATION                     | Lager-Nr.<br>Stock No.<br>N° de magasin | Stück<br>Qty.<br>Qté |
|----------------------|----------------------------|---------------------------------|---------------------------------|-----------------------------------------|----------------------|
| 1                    | Mini Mutter                | Nut                             | Écrou                           | 29701 56 3                              | 1                    |
| 2                    | Spannzange 6mm             | Collet 6mm                      | Pince de serrage 6mm            | 9369 839                                | 1                    |
| 3                    | Schutzkappe                | Covering cap                    | Capuchon                        | 29938 51 3                              | 1                    |
| 4 <sup>1)</sup>      | Deckel                     | Cover                           | Couvercle                       | 29937 81 7                              | 1                    |
| 5 <sup>3)</sup>      | Gehäuse                    | Housing                         | Carter                          | 29942 47 7                              | 1                    |
| <b>6</b>             | <b>Planetengetriebe</b>    | <b>Planetary gearing</b>        | <b>Engrenage planétaire</b>     | <b>29937 71 7</b>                       | <b>1</b>             |
| 6.1                  | Zangenspindel              | Spindle                         | Broche de serrage               | 29937 86 7                              | 1                    |
| 6.2                  | Rillenkugellager           | ball bearing                    | roulement à billes              | 9357 224                                | 2                    |
| 6.3 <sup>2)</sup>    | Zahmkrantz                 | Gear ring                       | Couronne dentée                 | 29911 07 7                              | 1                    |
| 6.4                  | Planetenradträger          | Planetary carrier               | Cage de transmission planétaire | 29927 60 7                              | 1                    |
| 6.5                  | Planetenrad                | planetary gear pinion           | roue planétaire                 | 29911 11 3                              | 2                    |
| 6.6                  | Nadelkranz                 | needle roller and cage assembly | cage à aiguilles                | 9357 122                                | 2                    |
| 6.7                  | Lagernadel                 | bearing needle                  | iguille                         | 9357 207                                | 2                    |
| 7                    | Beilagscheibe              | shim                            | rondelle de calage              | 29911 00 3                              | 1                    |
| <b>8</b>             | <b>Motorblock</b>          | <b>Motor complete</b>           | <b>Moteur cpl.</b>              | <b>29910 92 5</b>                       | <b>1</b>             |
| 8.1                  | Rillenkugellager           | ball bearing                    | roulement à billes              | 9357 033                                | 1                    |
| 8.2                  | Lagerschild vorne          | End plate front                 | Flasque de palier               | 29911 20 3                              | 1                    |
| 8.3                  | Rotor                      | rotor                           | rotor                           | 29911 22 3                              | 1                    |
| 8.4                  | Lamelle                    | vane                            | lamé                            | 29911 18 6                              | 5                    |
| 8.5                  | Zylinder                   | Cylinder                        | Cylindre                        | 29911 17 3                              | 1                    |
| 8.6                  | Spannstift                 | dowel pin                       | ergot                           | 9335 216                                | 1                    |
| 8.7                  | Lagerschild hinten         | end plate rear                  | flasque de palier               | 29911 21 3                              | 1                    |
| 8.8                  | Rillenkugellager           | ball bearing                    | roulement à billes              | 9357 046                                | 1                    |
| 9                    | Lufteinlassstück           | Air inlet                       | Entrée d'air                    | 29942 48 3                              | 1                    |
| <b>10</b>            | <b>Deckel vst.</b>         | <b>Cover</b>                    | <b>Couvercle</b>                | <b>60002 02 5</b>                       | <b>1</b>             |
| 10.1                 | Nadelrolle                 | Needle roller                   | iguille de palier               | 9357 421                                | 1                    |
| 10.2 <sup>2)3)</sup> | Deckel                     | Cover                           | Couvercle                       | 60002 03 3                              | 1                    |
| <b>11</b>            | <b>Lufteinlass vst.</b>    | <b>Air inlet compl.</b>         | <b>Entrée d'air comp.</b>       | <b>60002 00 5</b>                       | <b>1</b>             |
| 11.1 <sup>3)</sup>   | Lufteinlass                | Air inlet                       | Entrée d'air                    | 60002 01 3                              | 1                    |
| 11.2                 | O-Ring                     | o-ring                          | joint torique                   | 9319 353                                | 1                    |
| <b>12</b>            | <b>Aufnahme vst.</b>       | <b>Retainer</b>                 | <b>arrêtoir compl.</b>          | <b>60001 98 5</b>                       | <b>1</b>             |
| 12.1                 | Schalldämpferscheibe       | Silencer plate                  | Silencieux                      | 29942 43 3                              | 1                    |
| 12.2 <sup>2)</sup>   | Aufnahme                   | Retainer                        | arrêtoir                        | 60001 99 3                              | 1                    |
| <b>13</b>            | <b>Steuergehäuse vst.</b>  | <b>timing case</b>              | <b>Carter de distribution</b>   | <b>60001 96 5</b>                       | <b>1</b>             |
| 13.1 <sup>5)</sup>   | Innenring                  | ring                            | anneau                          | 9357 354                                | 1                    |
| 13.2 <sup>5)</sup>   | Innenring                  | ring                            | anneau                          | 9357 355                                | 1                    |
| 13.3 <sup>5)</sup>   | Innenring                  | ring                            | anneau                          | 9357 356                                | 1                    |
| 13.4                 | Steuergehäuse              | timing case                     | Carter de distribution          | 60001 97 7                              | 1                    |
| 14 <sup>4)</sup>     | Gerade Einschraubanschluss | male stud fittings, hexagonal   | Piquage droit male              | 9359 309                                | 1                    |
| 15 <sup>4)</sup>     | Gerade Einschraubanschluss | male stud fittings              | Piquage droit male              | 9359 306                                | 1                    |
| 16                   | Maulschlüssel 17           | engineers wrench 17             | clé plate 17                    | 9331 042                                | 1                    |
| 17                   | Maulschlüssel 20           | engineers wrench 20             | clé plate 20                    | 9331 023                                | 1                    |

- |    |                        |                        |                          |
|----|------------------------|------------------------|--------------------------|
| 1) | Anzugsmoment 20Nm      | Tightening torque 20Nm | Couple de démarrage 20Nm |
| 2) | Anzugsmoment 25Nm      | Tightening torque 25Nm | Couple de démarrage 25Nm |
| 3) | <u>Loctite Typ 243</u> | <u>Loctite Typ 243</u> | <u>Loctite Typ 243</u>   |
| 4) | <u>Loctite Typ 577</u> | <u>Loctite Typ 577</u> | <u>Loctite Typ 577</u>   |
| 5) | <u>Loctite Typ 638</u> | <u>Loctite Typ 638</u> | <u>Loctite Typ 638</u>   |



**ESR 30 AX25**  
**60001355**