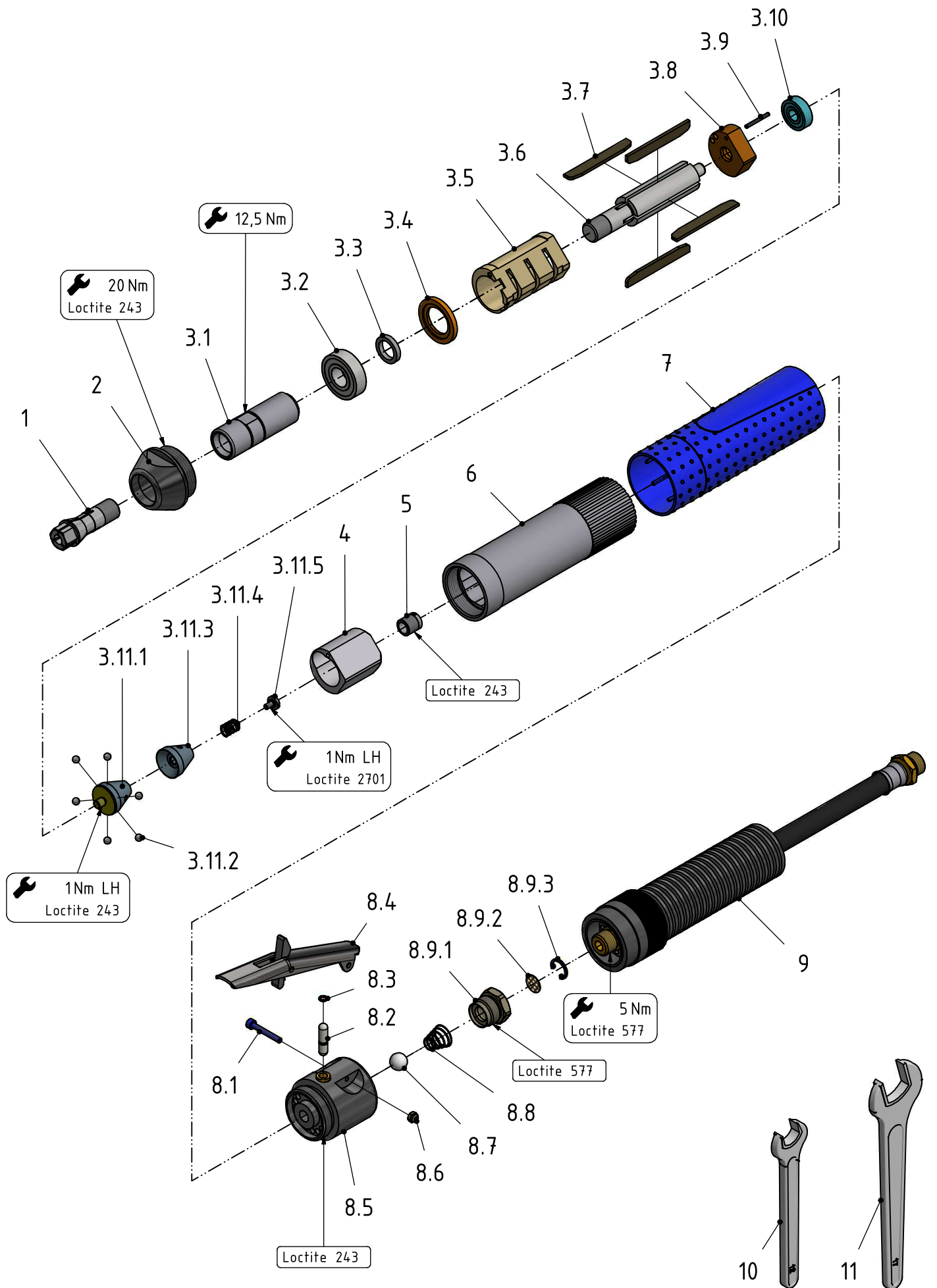


Schleifmaschine
Grinding machine
Meuleuse

G 120 H
60026695

**MANNESMANN
DEMAG**

| Nr. No. | BENENNUNG | DESCRIPTION | DESIGNATION | Lager-Nr. Stock-No. No. de magasin | STÜCK QUTY. |
|-------------|-----------------------------------|----------------------------|-----------------------------|------------------------------------------|----------------|
| 1 | Spannzange 6 mm | collet chuck | pince de serrage | 9369837 | 1 |
| 2 | Deckel | cover | couvercle | 29935343 | 1 |
| 3 | Motorblock | motor cpl. | moteur cpl. | 60026775 | 1 |
| 3.1 | Zangenspindel | spindle | broche de serrage | 29900303 | 1 |
| 3.2 | Rillenkugellager | ball bearing | roulement à billes | 9357011 | 1 |
| 3.3 | Distanzring | distance ring | entretoise | 29900283 | 1 |
| 3.4 | Lagerschild vorne | end shield | flasque-palier | 29900293 | 1 |
| 3.5 | Zylinder | cylinder | cylindre | 47091123 | 1 |
| 3.6 | Rotor | rotor | rotor | 60000903 | 1 |
| 3.7 | Lamelle | vane | palette | 47091146 | 4 |
| 3.8 | Lagerschild hinten | end shield | flasque-palier | 29500203 | 1 |
| 3.9 | Spannstift | dowel | ergot | 9335219 | 1 |
| 3.10 | Rillenkugellager | ball bearing | roulement à billes | 9357018 | 1 |
| 3.11 | Regler vst. | governor cpl. | régulateur cpl. | 60026727 | 1 |
| 3.11.1 | Reglerwelle | control shaft | arbre régulateur | 29928373 | 1 |
| 3.11.2 | Kugel | ball | bille | 9357912 | 6 |
| 3.11.3 | Deckel | cover | couvercle | 60026733 | 1 |
| 3.11.4 | Druckfeder | spring | ressort | 9330312 | 1 |
| 3.11.5 | Schraube | screw | vis | 29928393 | 1 |
| 3.11.6 | Deckel | cover | couvercle | 00519583 | 1 |
| 4 | Lufteinlassstück | air inlet | entrée d'air | 60026743 | 1 |
| 5 | Einstellschraube vst. | adjusting screw | vis de réglage | 60026755 | 1 |
| 6 | Gehäuse | housing | carter | 60007173 | 1 |
| 7 | Griffhülse | bushing | douille | 60007183 | 1 |
| 8 | Hebelventil vst. | valve cpl. | soupape cpl. | 60002515 | 1 |
| 8.1 | Zylinderschraube | cylindrical screw | vis à tête cylindrique | 9304009 | 1 |
| 8.2 | Ventilbolzen | valve pin | goupille de soupape | 29922973 | 1 |
| 8.3 | O-Ring | o-ring | joint torique | 9319337 | 1 |
| 8.4 | Sicherheitshebel vst. | safety lever | levier de sécurité | 60007455 | 1 |
| 8.5 | Ventilgehäuse vst. | valve case cpl. | cage de clapet cpl. | 60022205 | 1 |
| 8.6 | Sechskantmutter | nut | écrou | 9312131 | 1 |
| 8.7 | Kugel | ball | bille | 9319997 | 1 |
| 8.8 | Kegelfeder | spring | ressort | 9330247 | 1 |
| 8.9 | Siebträger vst. | screen carrier cpl. | filtre support cpl. | 46909205 | 1 |
| 8.9.1 | Siebträger | screen carrier | filtre support | 46909203 | 1 |
| 8.9.2 | Sieb | screen | filtre | 29800923 | 1 |
| 8.9.3 | Sicherungsring | circlip | circlip | 9314703 | 1 |
| 9 | Schlaucheinheit | hose unit | unité de tuyeau | 29923335 | 1 |
| | MITGELIEFERTES ZUBEHÖR | ACCESSORIES | ACCESSOIRES | | |
| 10 | Schlüssel SW 12 | wrench SW 12 | clé de SW 12 | 9331 007 | 1 |
| 11 | Schlüssel SW 17 | wrench SW 17 | clé de SW 17 | 9331 042 | 1 |
| | LIEFERBARES ZUBEHÖR | ACCESSORIES | ACCESSOIRES | | |
| | Wartungseinheit | filter lubricator | unité d'entretien | | |
| | Robotol-Spezial-Öl 10 l | Robotol special oil 10 l | Robotol huile spéciale 10 l | 095 085 33 | |



G 120 H
60026695

**MANNESMANN
DEMAG**

Änderungsstand: 1

04.05.2022