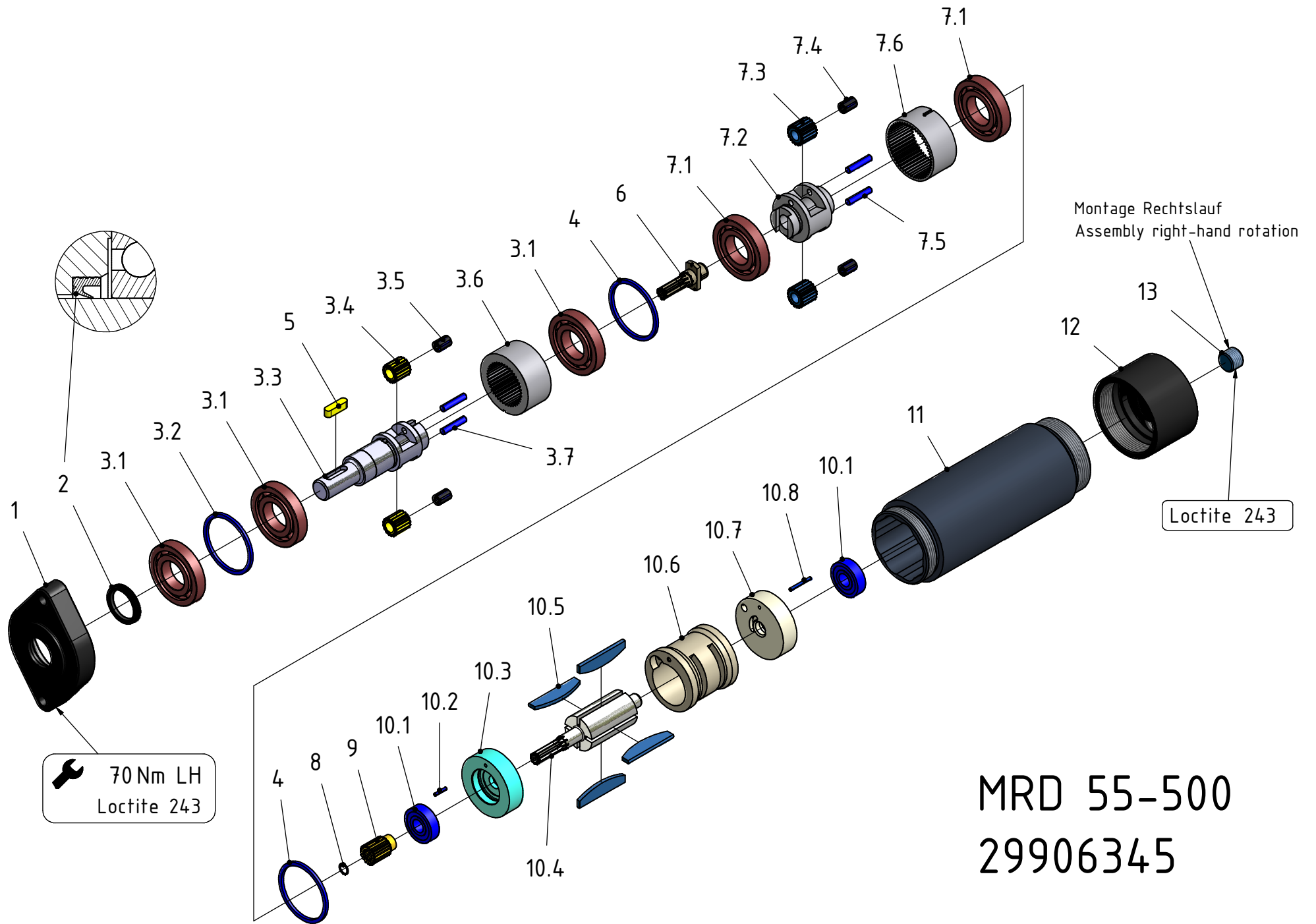


| Nr. No. | BENENNUNG | DESCRIPTION | DESIGNATION | Lager-Nr. Stock-No. No. de magasin | STÜCK QUTY. |
|------------|--------------------|----------------------------|---------------------------------|--|----------------|
| 1 | Flansch | flange | bride | 48052003 | 1 |
| 2 | Dichtring | seal ring | anneau de joint | 9321904 | 1 |
| 3 | Planetengetriebe | planetary gearing | engrenage planétaire | 47613005 | 1 |
| 3.1 | Rillenkugellager | ball bearing | roulement à billes | 9357065 | 3 |
| 3.2 | Distanzring | distance ring | entretoise | 47405003 | 1 |
| 3.3 | Planetenradträger | planetary carrier | cage de transmission planétaire | 47613013 | 1 |
| 3.4 | Planetenrad | planetary gear pinion | roue planétaire | 47413023 | 2 |
| 3.5 | Nadelkranz | needle roller and cage ass | cage de palier à aiguilles | 9357068 | 2 |
| 3.6 | Zahnkranz | gear ring | couronne dentée | 47413033 | 1 |
| 3.7 | Lagernadel | bearing needle | aiguille de palier | 9357093 | 2 |
| 4 | Distanzring | distance ring | entretoise | 47405003 | 2 |
| 5 | Passfeder | feather key | clavette | 9316033 | 1 |
| 6 | Einsteckritzel | pinion | pignon à emmanchement | 47413043 | 1 |
| 7 | Planetengetriebe | planetary gearing | engrenage planétaire | 47403005 | 1 |
| 7.1 | Rillenkugellager | ball bearing | roulement à billes | 9357065 | 2 |
| 7.2 | Planetenradträger | planetary carrier | cage de transmission planétaire | 47403013 | 1 |
| 7.3 | Planetenrad | planetary gear pinion | roue planétaire | 47403023 | 2 |
| 7.4 | Nadelkranz | needle roller and cage ass | cage de palier à aiguilles | 9357068 | 2 |
| 7.5 | Lagernadel | bearing needle | aiguille de palier | 9357093 | 2 |
| 7.6 | Zahnkranz | gear ring | couronne dentée | 47403033 | 1 |
| 8 | Sprengring | circlip | circlip | 9314593 | 1 |
| 9 | Aufsteckritzel | pinion | pignon creux | 47403043 | 1 |
| 10 | Motorblock | motor cpl. | moteur cpl. | 29800885 | 1 |
| 10.1 | Rillenkugellager | ball bearing | roulement à billes | 9357334 | 2 |
| 10.2 | Spannstift | dowel pin | ergot | 9335220 | 1 |
| 10.3 | Lagerschild vorne | end plate front | flasque de palier | 47401035 | 1 |
| 10.4 | Rotor | rotor | rotor | 47411013 | 1 |
| 10.5 | Lamelle | vane | palette | 29303426 | 4 |
| 10.6 | Zylinder | cylinder | cylindre | 47411003 | 1 |
| 10.7 | Lagerschild hinten | end plate rear | flasque de palier | 47401065 | 1 |
| 10.8 | Spannstift | dowel | ergot | 9335219 | 1 |
| 11 | Gehäuse | housing | carter | 03135774 | 1 |
| 12 | Lufteinlass | air inlet | entrée d'air | 29904643 | 1 |
| 13 | Verschlusschraube | locking screw | bouchon | 9306232 | 1 |



MRD 55-500
 29906345