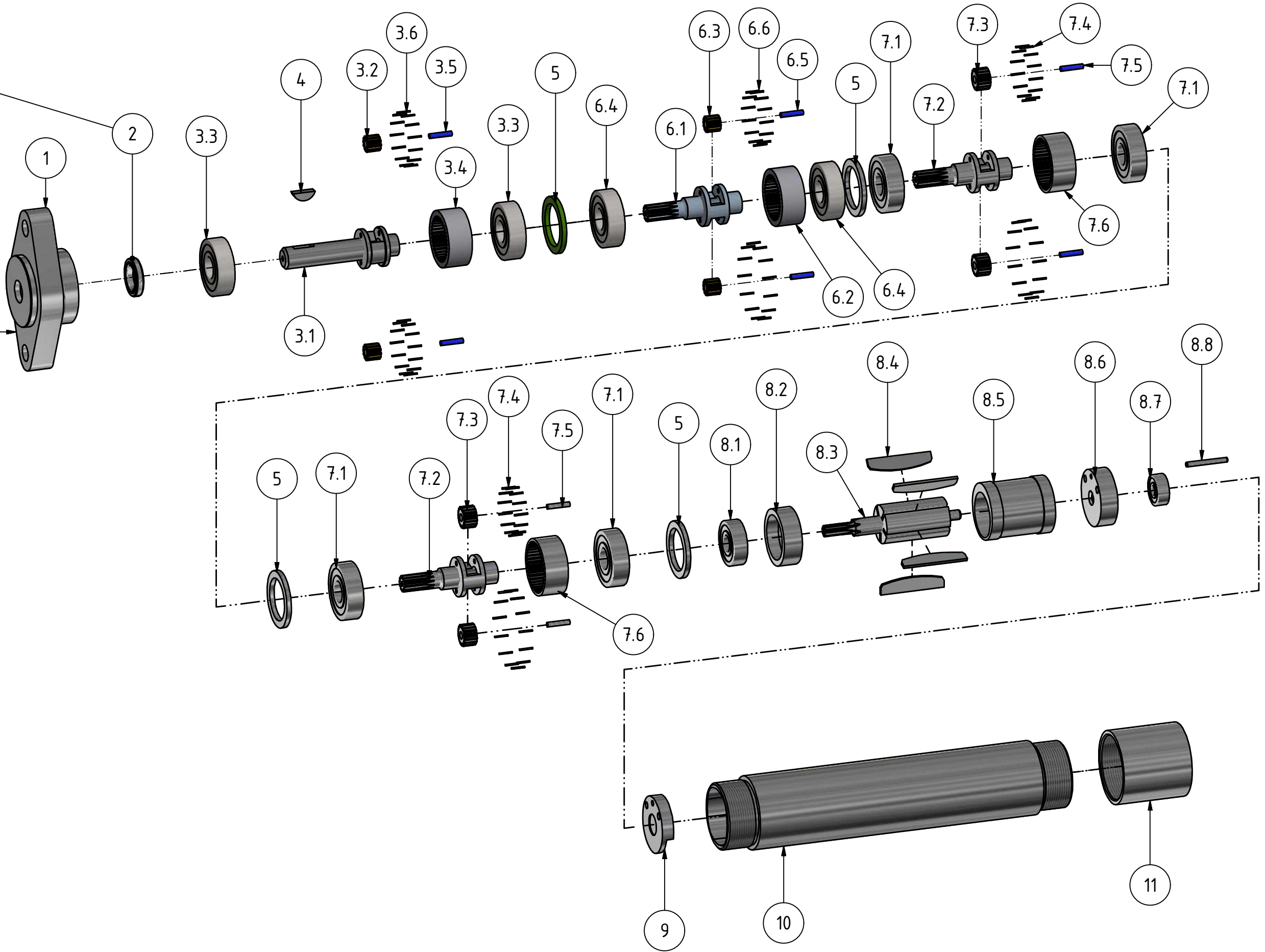


30 Nm
Loctite 243



| | | |
|----------------------------------|-------------------|------------------------------------|
| <p>MUD 9-24 F55 29907237</p> | | <p>MANNESMANN DEMAG</p> |
| <p>Änderungsstand:</p> | <p>16.04.2019</p> | |

**Druckluftmotor
Grinding spindle
broche de robot**

**MUD 9-24 F55
29907 23 7**

**MANNESMANN
DEMAG**

| Nr. No. | BENENNUNG | DESCRIPTION | DESIGNATION | Lager-Nr. Stock-No. No. de magasin | STÜCK QTY. |
|------------|--------------------|-----------------------|---------------------------------|--|---------------|
| 1 | Flansch | flange | bride | 48102177 | 1 |
| 2 | Dichtring | seal ring | anneau de joint | 9321908 | 1 |
| 3 | Planetengetriebe | planetary gearing | engrenage planétaire | 48103205 | 1 |
| 3.1 | Plantenradträger | planetary carrier | cage de transmission planétaire | 48103193 | 1 |
| 3.2 | Planetenrad | planetary gear pinion | roue planetaire | 03139274 | 2 |
| 3.3 | Rillenkugellager | ball bearing | roulement à billes | 9357066 | 2 |
| 3.4 | Zahnkranz | gear ring | couronne dentée | 48103063 | 1 |
| 3.5 | Lagernadel | bearing needle | aiguille de palier | 9357216 | 2 |
| 3.6 | Lagernadel | bearing needle | aiguille de palier | 9357483 | 26 |
| 4 | Scheibenfeder | Woodruff key | clavette disque | 9416806 | 1 |
| 5 | Distanzring | distance ring | entretoise | 48105003 | 4 |
| 6 | Planetengetriebe | planetary gearing | engrenage planétaire | 48103235 | 1 |
| 6.1 | Planetenradträger | planetary carrier | cage de transmission planétaire | 48103273 | 1 |
| 6.2 | Zahnkranz | gear ring | couronne dentée | 48103063 | 1 |
| 6.3 | Planetenrad | planetary gear pinion | roue planetaire | 03139274 | 2 |
| 6.4 | Rillenkugellager | ball bearing | roulement à billes | 9357066 | 2 |
| 6.5 | Lagernadel | bearing needle | aiguille de palier | 9357216 | 2 |
| 6.6 | Lagernadel | bearing needle | aiguille de palier | 9357483 | 26 |
| 7 | Planetengetriebe | planetary gearing | engrenage planétaire | 48103225 | 2 |
| 7.1 | Rillenkugellager | ball bearing | roulement à billes | 9357066 | 2 |
| 7.2 | Planetenradträger | planetary carrier | cage de transmission planétaire | 48103273 | 1 |
| 7.3 | Planetenrad | planetary gear pinion | roue planetaire | 03139374 | 2 |
| 7.4 | Lagernadel | bearing needle | aiguille de palier | 9357483 | 26 |
| 7.5 | Lagernadel | bearing needle | aiguille de palier | 9357216 | 2 |
| 7.6 | Zahnkranz | gear ring | couronne dentée | 48103083 | 1 |
| 8 | Motorblock | motor cpl. | moteur cpl. | 29804415 | 1 |
| 8.1 | Rillenkugellager | ball bearing | roulement à billes | 9357214 | 1 |
| 8.2 | Lagerschild vorne | end plate front | flasque de palier | 48101023 | 1 |
| 8.3 | Rotor | rotor | rotor | 48101143 | 1 |
| 8.4 | Lamelle | vane | palette | 29300246 | 5 |
| 8.5 | Zylinder | cylinder | cylindre | 48111053 | 1 |
| 8.6 | Lagerschild hinten | end plate rear | flasque de palier | 48111045 | 1 |
| 8.7 | Rillenkugellager | ball bearing | roulement à billes | 9357213 | 1 |
| 8.8 | Spannstift | dowel | ergot | 9335219 | 1 |
| 9 | Lufteinlassstück | air inlet | entrée d'air | 48115143 | 1 |
| 10 | Gehäuse | housing | carter | 48102197 | 1 |
| 11 | Lufteinlass | air inlet | entrée d'air | 29904667 | 1 |