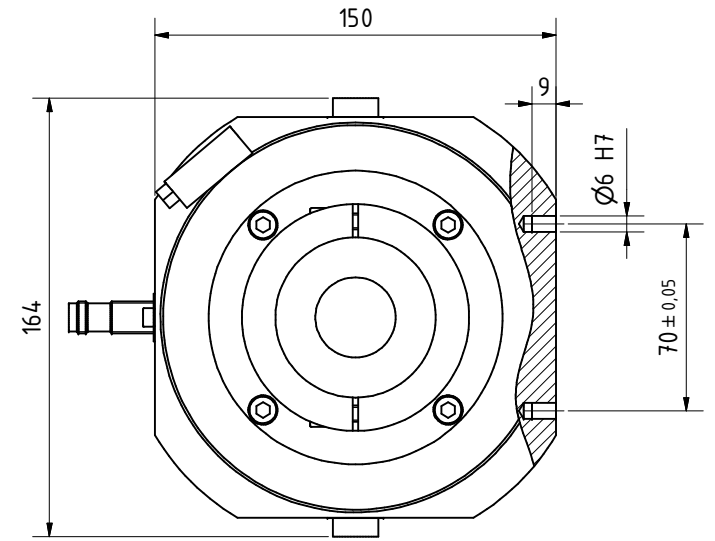
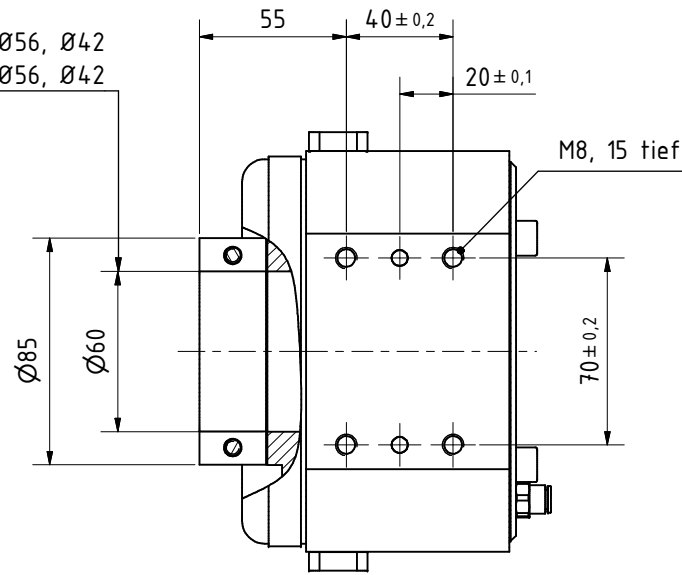
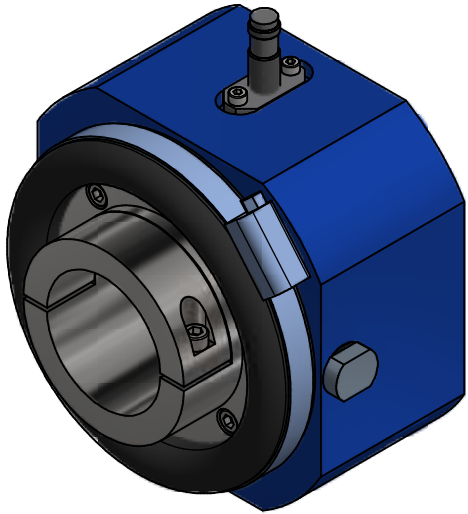
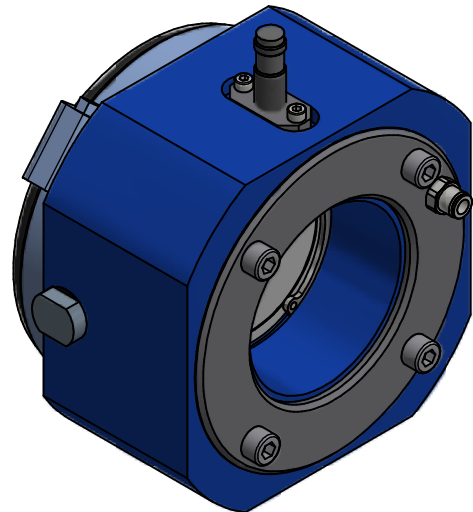
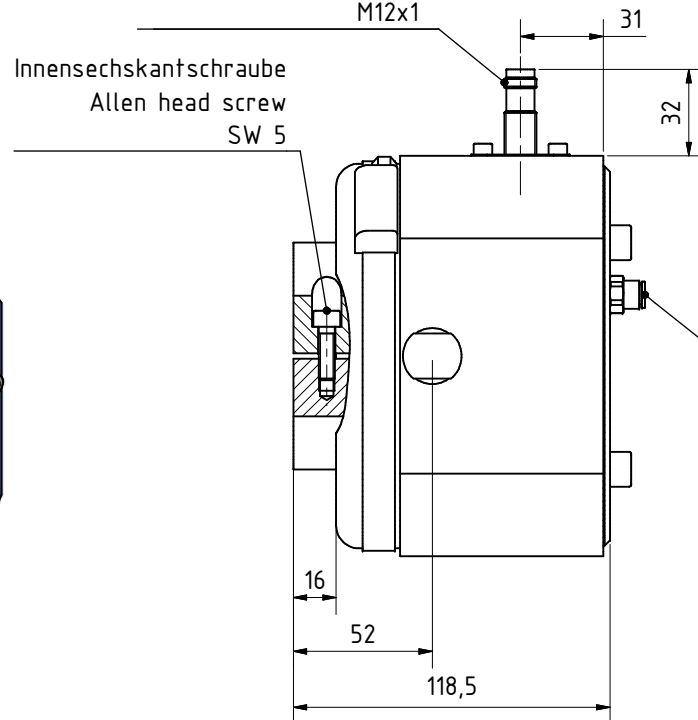


Adapterhülse verfügbar für Ø56, Ø42
 adapter sleeve available for Ø56, Ø42



Sensoranschlussgewinde
 thread of sensor
 M12x1



für Schlauch mit Aussen-Ø 6 mm
 for air hose O.D. 6 mm

SSU 60
 60058005

**MANNESMANN
 DEMAG**
 Änderungsstand: 10.11.2016